

INTEGRATE EV INFORMATION INTO YOUR PRICE SIGN



DISPLAY EV PRICING AND CHARGER AVAILABILITY

As the world moves towards a greener future, the integration of electric vehicle (EV) charging stations into petrol stations is becoming increasingly common. However, displaying accurate EV price information alongside traditional petrol prices on your monolith sign poses significant challenges, especially when a local POS system is already in place.

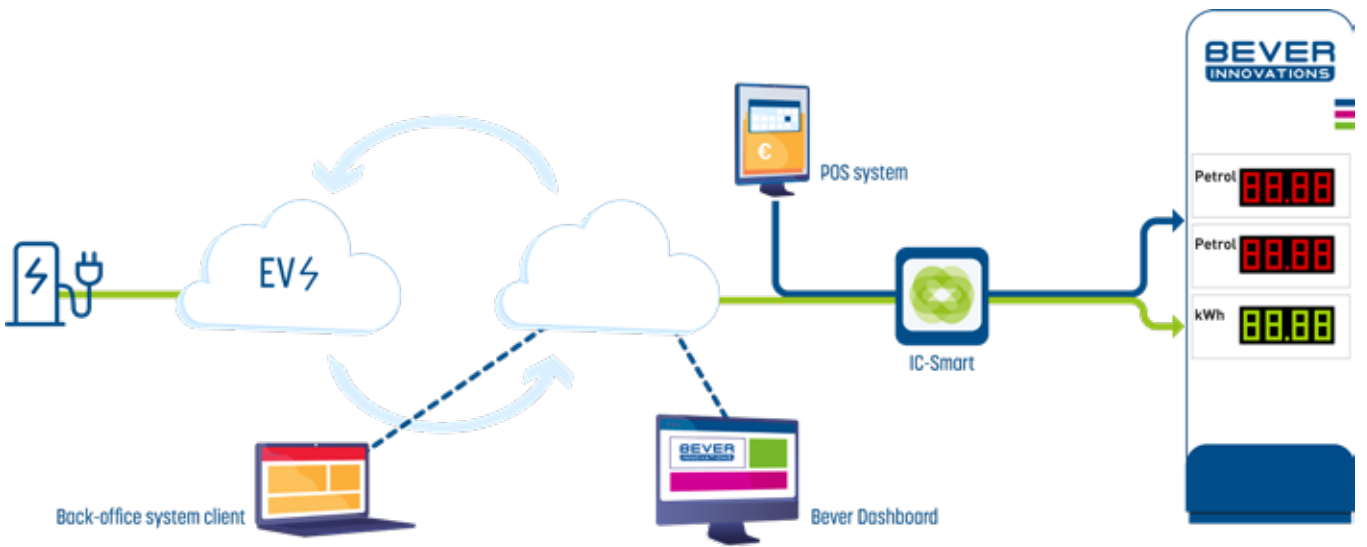
To address these obstacles, Bever Innovations proudly presents the IC Smart, a fast, cost-effective, and easy-to-implement solution

IC SMART: INTEGRATE POS AND EV-STANDARDS INTO ONE DATA STREAM

The IC Smart is a cutting-edge interface converter that bridges the gap between petrol station POS data and online EV protocol standards. With minimal investment, petrol station owners can now effortlessly display EV kWh price information on their existing or new LED price signs, ensuring that customers have access to transparent and up-to-date pricing for both traditional fuel and electric charging.

Key features of the IC Smart include:

- Integration of POS and EV protocol data streams:
The IC Smart unifies the diverse data streams, ensuring accurate pricing information is shown on the LED Price Displays in the price sign
- Real-time charger availability:
The IC Smart enables the display of currently available charging spaces, providing convenience to EV drivers.



BEVER DASHBOARD: MANAGE YOUR PRODUCTS ONLINE

The Bever Dashboard is an online cloud-based system that integrates information from EV standard protocols, such as EV price information and charger availability. In this dashboard, Bever Innovations' products integrated with Bever Smart Technology are visible and manageable online, providing customers with real-time information.



The Bever Dashboard offers more benefits:

- Centralized management:
Easily view and manage multiple locations with installed Bever products from one user-friendly dashboard.
- Manual price adjustment:
Remote and manual adjustment of fuel and EV prices, even without a connection to a POS system.
- Dynamic content programming:
Effortlessly customize and program pricing and marketing information on LED Screens, enhancing customer engagement.
- Integration of a customer-specific back-office system is possible, facilitating asset management.

INTEGRATE YOUR BACK-OFFICE SYSTEM

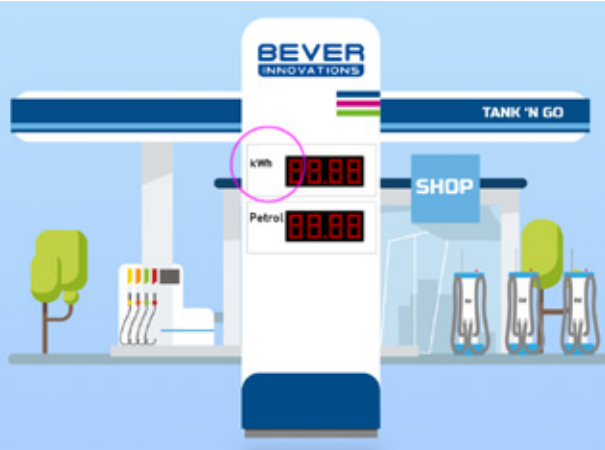
The connection with a customer's back-office system can be established upon the customer's request, enhancing asset management and simplifying operations. The API software interface enables efficient data exchange, eliminating the need to check multiple maintenance systems. Now, all information is centrally logged in the client's familiar system, making Bever products remotely manageable.

DISPLAY YOUR EV PRICES - EXPLORE THE POSSIBILITIES

By adding an IC Smart in your totem, Bever Innovations offers a seamless integration of POS and EV data streams, ensuring accurate pricing is displayed on an LED Price Display or LED Screen. We provide various options tailored to meet the customer's requirements and budget.

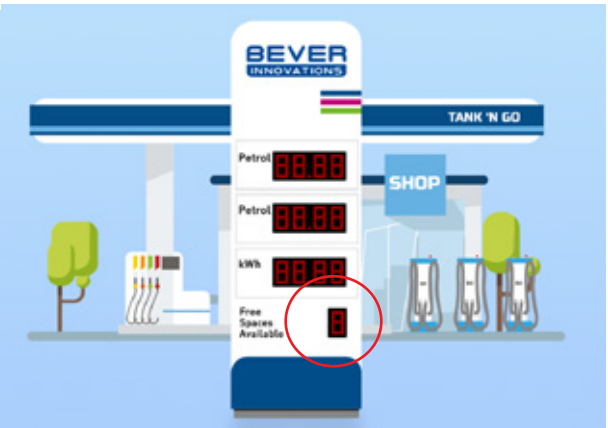
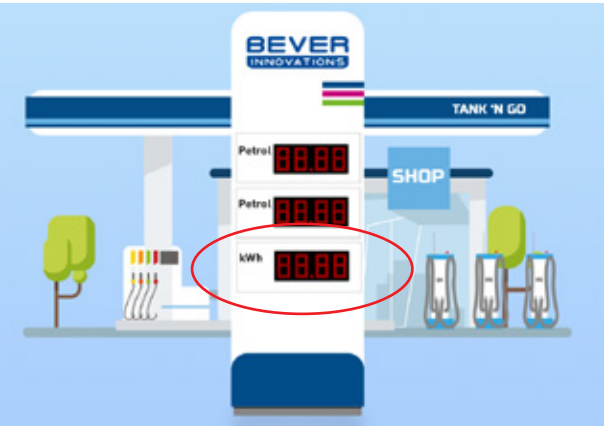
1. Convert an existing Bever LED Price Display into an EV price display

- Easily transform existing Bever LED Price Displays into EV price displays by only adding the IC Smart.
- The IC Smart provides a data stream integration between EV standards and POS system information, so that the correct EV price as well as the correct petrol prices are displayed.
- Only the sticker on the price sign needs to be changed to indicate the kWh price.



2. Add a new LED display to an existing monolith:

- For a monolith with Bever LED Price Displays it is possible to add a new LED display, in order to show the EV price on it.
- The IC Smart is added to the totem and ensures that both petrol prices are shown on the existing price signs, as well as the EV price on the new Bever LED display.
- If you have price signs from another manufacturer in your monolith, we will gladly look at the possibilities with you.



3. Add a LED display to your totem to indicate the number of charging spaces available:

- If desired, a LED display can be used to show the number of EV chargers available at the station.
- This offers customers the convenience of being able to see quickly how many chargers are available at the station when multiple EV charging spaces are present.
- The IC Smart in the totem provides integration with EV standards to ensure that this information is always up to date.

4. Integrate a dynamic LED screen for (EV) prices, promotions, and charger availability information:

- The InMo LED Screen offers the capability to display not only fuel prices but also EV price information and the number of EV chargers available, functioning as an all-in-one price display, information screen, and promotional tool.
- The LED screen is accessible online through the Bever Dashboard, enabling remote management.



PROJECTS:

CHANGE EV PRICES REMOTELY, VIA BEVER DASHBOARD

- Client:** EVO ENERGY, EV-HyperHubs
- Location:** York, England
- Project:** Installation LED Price Displays. Integration customer back-office system.
- Client's wish:** Because York City Council uses standardized pricing in their network, EV price changes must be applied simultaneously across all locations.



“Changing prices via the Bever Dashboard is utilized in EVO Energy’s HyperHubs. In these Hyperhub projects, the ability to make remote price changes across all sites was a very important requirement. York City Council has standardized pricing across their network, so price changes must be made at all sites simultaneously.”

Howell Griffiths
Business Development Director UK, Ireland and Scotland, Bever Innovations

DISPLAY KWH AND GNV PRICE INFORMATION + CO₂ REDUCTION

- Client:** Karrgreen, Multi-Fuel station (GNV and EV-chargers)
- Location:** Moréac, France
- Project:** Installation LED Price Displays. Integration onsite POS system and customer back-office system.
- Client's wish:** Display price info GNV and kWh. In addition, the customer also wanted to indicate the precise calculation of the CO₂ emission reduction achieved through the use of alternative energy sources.



“At Karrgreen Moréac station, multiple LED Price Displays, including a specific CNG display, have been installed and are locally managed through a standard POS connection for accurate CNG pricing. Furthermore, KarrGreen uses Bever Smart Technology to establish an online connection with their back-office system, allowing real-time access to EV prices and CO2 emission reduction calculations, which are then displayed on other LED Price Displays within the same sign.”

Jean-Michel Ludot,
Sales manager France, Bever Innovations

SHOW CHARGER AVAILABILITY + INTEGRATION BACK-OFFICE SYSTEM

- Client:** Shell Recharge, EV-station
- Location:** Fulham Londen, England
- Project:** Integration customer back-office system, installation of MID Sign, LED Screen and LED Canopy Downlights.
- Client's wish:** Showing EV charger availability on the LED Screen, in combination with additional dynamic content.



“On the InMo LED Screen, Shell displays dynamic content to its customers. The system is automatically updated to display the number of EV chargers available, something that was very important for Shell. The solution is very flexible and can also be used to indicate waiting times or prices, anything is possible.”

Rutger van Dierendonck
Technical Director Bever Innovations

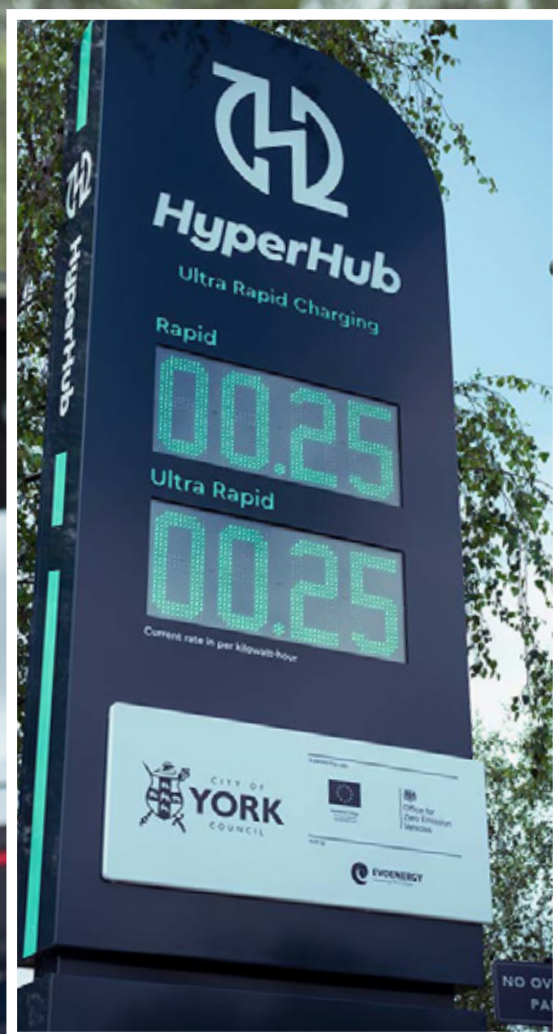
PARKING SPACE AVAILABILITY + BACK-OFFICE INTEGRATION

- Client:** E. Leclerc (in collaboration with the Assmann Group)
- Location:** Cogolin, France
- Project:** Installation of LED Price Displays. Integration of the customer’s back-office system
- Client's wish:** Display the number of available parking spaces at the Leclerc Cogolin hypermarket parking lot without the need for cable installation.



“At the request of E. Leclerc, the connection with the Assmann Group’s back-office system was established, simplifying operations and enabling remote asset management. The API software facilitates efficient exchange of parking space information, and all data is centrally stored and monitored in the Assmann Group’s system, allowing for remote management of Bever’s LED displays.”

Jean-Michel Ludot,
Sales manager France, Bever Innovations



Bever Innovations B.V.

Techniekweg 2 | 4301 RT Zierikzee
The Netherlands

Tel +31(0)111 74 54 00

info@beverinnovations.com

www.beverinnovations.com

[Find here your representative](#)